



BENNETT, COLEMAN & CO. LTD. • ESTABLISHED 1838
EPAPER.TIMESOFINDIA.COM

TIMES

Delhi, April 7, 2018
Advertorial, Property Promotional Feature

YOUR REALTY COMPANION SINCE 1995

PROPERTY

REALTY GROWTH ALONG YAMUNA EXPRESSWAY

Once Jewar airport takes off and the Metro link comes to the area, the skyline along Yamuna Expressway could pretty well become the cynosure of the NCR realty, market watchers say

The current real estate scenario and future prospects along Yamuna Expressway are very bright, by all accounts.

● Yamuna Expressway is already operational and directly connects Greater Noida to Agra, which has enhanced the realty prospects of neighbouring regions as well.

● Master Plan, 2031, of Yamuna Expressway Industrial Development Authority (YEIDA) promises immense scope for real estate development, while news of Jewar airport has stoked greater interest among investors. Long term vision of the region looks bright, promising better returns in the future.

● According to current layout and plan for the region, Yamuna Expressway has been divided into zones, each earmarked for diverse infrastructural activities. Yamuna Expressway authority has under its belt 2.5 lakh hectares, with

1,187 villages comprising 6 districts, along both sides of the 165km-long, 6-lane expressway.

● FNG corridor's third phase link-up with Yamuna Expressway will see more areas opened up to infrastructure in the years to come. The crossover of Eastern Peripheral Expressway over Yamuna Expressway will occur 9km from the zero point in Greater Noida.

● **Manoj Gaur, MD of Gaursons India, says: "With more plans to revamp the region and bring along better infrastructure, demand for housing along Yamuna Expressway has, off late, started picking up with investors making a strong come back."**

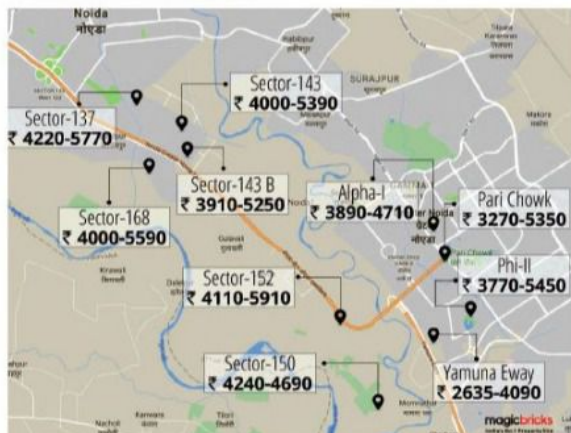


● Keeping future growth in and around Yamuna Expressway in mind, the UP government has declared Yamuna Expressway belt as an electronics manufacturing zone. The UP state government is planning to lay the foundation stone of Phase 1 of this project by October 2018.

● Estimated to cost Rs 20,000 crore, the Jewar International airport project has been pending for the past 15 years over regulatory hurdles. Now, the UP government has appointed Yamuna Expressway as the nodal agency of the project and directed officials to expedite the land acquisition for early launch of the ground work.

● YEIDA has already identified 5,000 hectares for this purpose.

— A K Tiwary



● **Manoj Gaur, MD of Gaursons India, says: "With more plans to revamp the region and bring along better infrastructure, demand for housing along Yamuna Expressway has, off late, started picking up with investors making a strong come back."**