



# WHY YEIDA? MAKE A STUNNING

ARRIVAL 

## At NCR’s most iconic destination

YEIDA stands for Yamuna Expressway Industrial Development Authority and today has the largest industrial land bank in the country which would see rapid development. The initial budget set for YEIDA was Rs. 12,500 crore approximately. With an area of 2,689 sq km under its belt, it is the biggest industrial township project that covers connectivity, industrial development, and infrastructure development. YEIDA also promises to develop smart villages along the 165 km stretch. It is one of the driving forces behind Noida’s growth and development. YEIDA’s master plan of 2031 predicts rapid and extensive real estate development. Yamuna Expressway is a development that connects Delhi/Noida/Gr. Noida with Western UP/Agra and Lucknow.

- World-class 165 km Yamuna Expressway
- India’s longest 6-lane controlled-access expressway
- Installed with ‘Intelligent Transport System
- The faster connection between National Capital Region to Agra and Lucknow
- The fastest growing Economic Zone
- Home to the fast developing Noida International Airport
- Mega Industrial projects are being commissioned in the region ensuring economic upliftment
- 1000 acres Film City announced
- Another Gurgaon Story getting unfolded
- Super connectivity with approved Metro and Proposed Mono Rail
- Zip drive to Noida & Gr. Noida in 15-20 mins
- The only F1 circuit in the country
- Multiple Industrial hubs being developed such as Textile Zone, Electronic Zone & Toy City
- YEIDA Region is currently the economic hotspot of the country

GET READY TO  
BOARD 



### THE THRIVING IT HUB

- A large number of IT & ITES companies
- Various big companies are opening up
- Growing job opportunities



### MODERN INFRASTRUCTURE

- Wider roads with huge scope for expansion
- Modern shopping malls & commercial spaces
- World-class hospitals, schools, colleges & other educational institutes



### PROGRESSIVE GOVERNMENT INITIATIVES

- Investment-friendly infrastructure
- Industrial parks, entertainment zones and SEZs being developed



### FAVOURITE AMONGST BIG INVESTORS

- Aatm-Nirbhar Bharat - Homegrown Tech giant Intex is also looking for a big-time investment in Greater Noida.
- Already made a deal of 650 crores right along Yamuna Expressway
- Textile Park on 200 acres of land will generate 5 Lakh Jobs
- Microsoft is likely to set up new 4,000-employee campus near the upcoming Noida International Airport – the second-largest in India





# WHY YAMUNA EXPRESSWAY? CHECK-IN TO THE WORLD OF OPPPORTUNITIES

Yamuna Expressway has today evolved as one of the most vibrant real estate destinations. With a number of ongoing world-class developments and meticulous expansion, it is poised to change the face of Delhi-NCR.



Disclaimer: All information above is in reference from newspapers and news portals.

## MOST MODERN INFRASTRUCTURE



It's a 165 km long 6-lane Expressway surrounded by 1,187 VILLAGES comprising of 6 DISTRICTS



The travelling time between AGRA & DELHI that stretches 211 km has come down to 150 minutes & just 90 minutes from Greater Noida.



The U.P. government has declared Yamuna Expressway belt as an ELECTRONICS MANUFACTURING ZONE



The U.P. government has appointed Yamuna Expressway as the nodal agency of the project and YEIDA has already identified 5,000 HECTARES for this purpose.



PATANJALI'S Rs. 6,000-CRORES Herbal Food Park will generate employment for 85000



WORLD TRADE CENTRE is investing 21 BILLION DOLLARS spread across 42 acres



India's Fourth Largest IT-BPO DESTINATION



VIVO, Rs. 3500 CRORES a leading mobile manufacturer has taken 169 acres of land and will invest creating 25,000 JOBS



Dream destination for home buyers



Jewar is rapidly developing towards becoming the most beautiful city of the World



UP's first Metro Coach Manufacturing Company will generate EMPLOYMENT for 25000



Metro Extension till JEWAR AIRPORT TERMINAL by 2025



Proposed monorail & ISBT



F1 Track at Buddh International Circuit



TOY CITY will be developed on a 100 ACRE land



Aviation Industry & Transport Hub - 5000 Hectares



TEXTILE PARK on 200 acres of land will generate 5 LAKH JOBS



The biggest PAYTM Campus spread across 10 acres to provide 15000 employments



Infosys, India's second largest software firm to invest Rs. 750 crores in the first phase

**Disclaimer:** All images including stock images, colours, pictures and accessories are indicative and used for illustrative purposes only. For the actual project details, please refer to the specifications mentioned in the subsequent pages of this brochure.



# LIFETIME ASPIRATIONS... NOW SET TO SOAR HIGH TRULY WORLD CLASS

Noida International Airport is poised to be India's largest airport and among the world's largest airports. Only the O'Hare International Airport and the Dallas/Fort Worth International Airport are larger, with eight and seven runways respectively. The airport is giving a major fillip to infrastructure, employment creation, demand for residential, commercial, retail, hospitality, while changing the property market dynamics in the region.

- Proposed as a 2-runway airport by 2022-23
- Future expansion into a 7200-acre 6-runway airport
- It will handle 5 million passengers per annum (MPA) initially
- Up-to 60 MPA after its expansion over a period of 30 years



## SUPERFAST CONNECTIVITY

Noida International Airport will be connected to the Yamuna Expressway, allowing domestic and international tourists to reach Delhi, Noida, Agra, Mathura and Vrindavan. The six-lane road will provide direct connectivity from the Yamuna Expressway to the site of the airport. Also to be connected to Delhi Metro via the Noida Metro route and via the Delhi-Faridabad-Ballabhgarh-Palwal-Jewar route.



## MAJOR UPDATES

- January 2020: Land acquisition completed for phase-1 which required 1334 hectares out of 5000 hectares.
- Phase-1 of the airport project to be completed by year 2023.
- 7 October 2020: Final Agreement signed between NIAL (Noida International Airport Limited) and Zurich AG, the Swiss company selected to build the Noida International Airport.





# TAKE OFF ON A BLOCKBUSTER JOURNEY

## One-of-its-kind hub for art, entertainment & cinema INDIA'S 'BIGGEST' FILM CITY

While it will revive the region's fortunes, there will be unprecedented boost to price appreciation and increased infrastructure activity. It will see a spurt in demand for luxury residential, commercial and hospitality segments also, reviving the property market in nearby areas like Noida, Greater Noida and Yamuna Expressway.

### THE BLUEPRINT

- Dedicated Infotainment Zone with all world-class civil, public & technological facilities
- Industrial area (studios, sets) will spread over 780 acres
- The remaining 220 acres for commercial purposes
- Comprising outdoor locations, open grounds, food court (s), a shopping complex (es), a theatre & a film university.
- Proposed as meticulous development of 5 zones
- Government's one-of-the-most ambitious projects
- Massive boost to investment, growth & employment





# YOUR DREAM DESTINATION IS HERE! @



## ‘A COMPLETE CITY’

Gaur Yamuna City is an integrated township, spread over a massive 101 hectares (250 acres) of land. Thoughtfully planned as one-of-the-biggest amalgamations of residential, commercial, retail, recreation and fun, it is a self-sustained, eco-rich world, ready to offer you a lifestyle that you had been waiting for so many years.

**VILLAS, PLOTS, APARTMENTS, EDUCATION, SHOPPING,  
SPORTS, RECREATION & MUCH MORE**







**GAUR  
YAMUNA  
CITY**

A 101 HECTARES (250 ACRES)  
INTEGRATED TOWNSHIP  
ON YAMUNA EXPRESSWAY

## ELEVATE YOUR LIFESTYLE TO A NEW HIGH

### RISE TOGETHER IN A ‘COMPLETE CITY’

Gaur Yamuna City is an integrated township, spread over a massive 101 hectares (250 acres) of land. Thoughtfully planned as one-of-the-biggest amalgamations of residential, commercial, retail, recreation and fun, it is a self-sustained, eco-rich world, ready to offer you a lifestyle that you had been waiting for so many years.

Plots, Apartments, Retail Shops, Studio Apartments, Themed Villas, Sports, Recreation & a lot more



Children Park



Yamuna Lake Park



Road Infrastructure



16th Parkview



GYC Galleria Shopping Complex



108 Feet Lord Krishna Statue  
and Shri Radha Krishna Temple  
(Under Construction)



Artist's Impression

### HIGHLIGHTS

- BEAUTIFUL YAMUNA LAKE PARK WITH BOATING FACILITY.
- POSSESSION STARTED & FAMILIES HAVE MOVED IN THE GROUP HOUSING AND VILLA PROJECTS.
- OPERATIONAL GYC GALLERIA CONVENIENT SHOPPING CENTER
- INDIA'S TALLEST STATUE OF LORD KRISHNA STANDING AT 108 FEET TALL ATOP A TEMPLE (UNDER CONSTRUCTION).
- OPERATIONAL GAURS INTERNATIONAL SCHOOL
- MORE THAN 4 KM. ROAD INFRASTRUCTURE IN PLACE.
- RAIN WATER HARVESTING, SEWAGE TREATMENT PLANT AND SOLID WASTE MANAGEMENT SYSTEM
- DEVELOPING CRICKET GROUND, TENNIS, BADMINTON, VOLLEYBALL, BASKETBALL, SKATING RINK, ATHLETIC TRACK & MORE WITHIN THE TOWNSHIP.



Introducing  
**7<sup>TH</sup> PARKVIEW**  
*Luxury By Nature*



Artist's Impression

For the first time, Gaurs is launching residential plots that face international standard cricket ground on one side and Lord Krishna Temple on the other side. Nestled within relaxed surroundings, it's where you will inhabit your dream world, blessed with world-class amenities and facilities.

**RESORT STYLE LIVING  
AMIDST RELAXED ENVIRONS**

- Acres of natural landscapes & well-manicured gardens
- Open air environment to feel rejuvenated all the time
- Panoramic views of nature & plush greens for the lifetime

**Disclaimer:** All images including stock images, colours, pictures and accessories are indicative and used for illustrative purposes only. For the actual project details, please refer to the specifications mentioned in the subsequent pages of this brochure.



INTRODUCING



At

7<sup>TH</sup> PARKVIEW

LUXURY BY NATURE

# WELCOME TO A FIRST-CLASS LIVING EXPERIENCE

Elegant Residential Plots in close vicinity to  
Upcoming Noida International Airport



Set close to the world-class Noida International Airport, Aero Villas is a dream abode designed exclusively for the luxury seekers. Synonymous with absolute comfort and exquisite finesse, it is your very own sanctuary of luxury and peace in the heart of NCR's most happening destination, Yamuna Expressway.

Be part of a safe and uplifting environment in this gated enclave filled with modern amenities, offering panoramic views of the breathtaking skyline. Come; let your dreams take flight.





  
**AEROVILLAS**  
RESIDENTIAL PLOTS | 7<sup>TH</sup> PARKVIEW  
GAUR YAMUNA CITY

**Disclaimer:** All images including stock images, colours, pictures and accessories are indicative and used for illustrative purposes only. For the actual project details, please refer to the specifications mentioned in the subsequent pages of this brochure.





A 101 HECTARES (250 ACRES)  
INTEGRATED TOWNSHIP  
ON YAMUNA EXPRESSWAY

## MASTER PLAN

### LEGEND

1. YAMUNA DWAR
2. SANGAM DWAR
3. CAPITOL HILL GATE

### A. MASTER PLAN COMMERCIAL

- GAURS RUNWAY SUITES
- PETROL PUMP
- MULTI LEVEL CAR PARKING
- COMMERCIAL FOOT PRINT

### B. SCHOOL / INSTITUTIONAL

- EDUCATIONAL PLOTS

### C. CONVENIENT / SECTOR SHOPPING

- ### D. DISPENSARY
- NURSING HOME (NH)

### E. GYC GALLERIA

### GR-01. ECO PARK

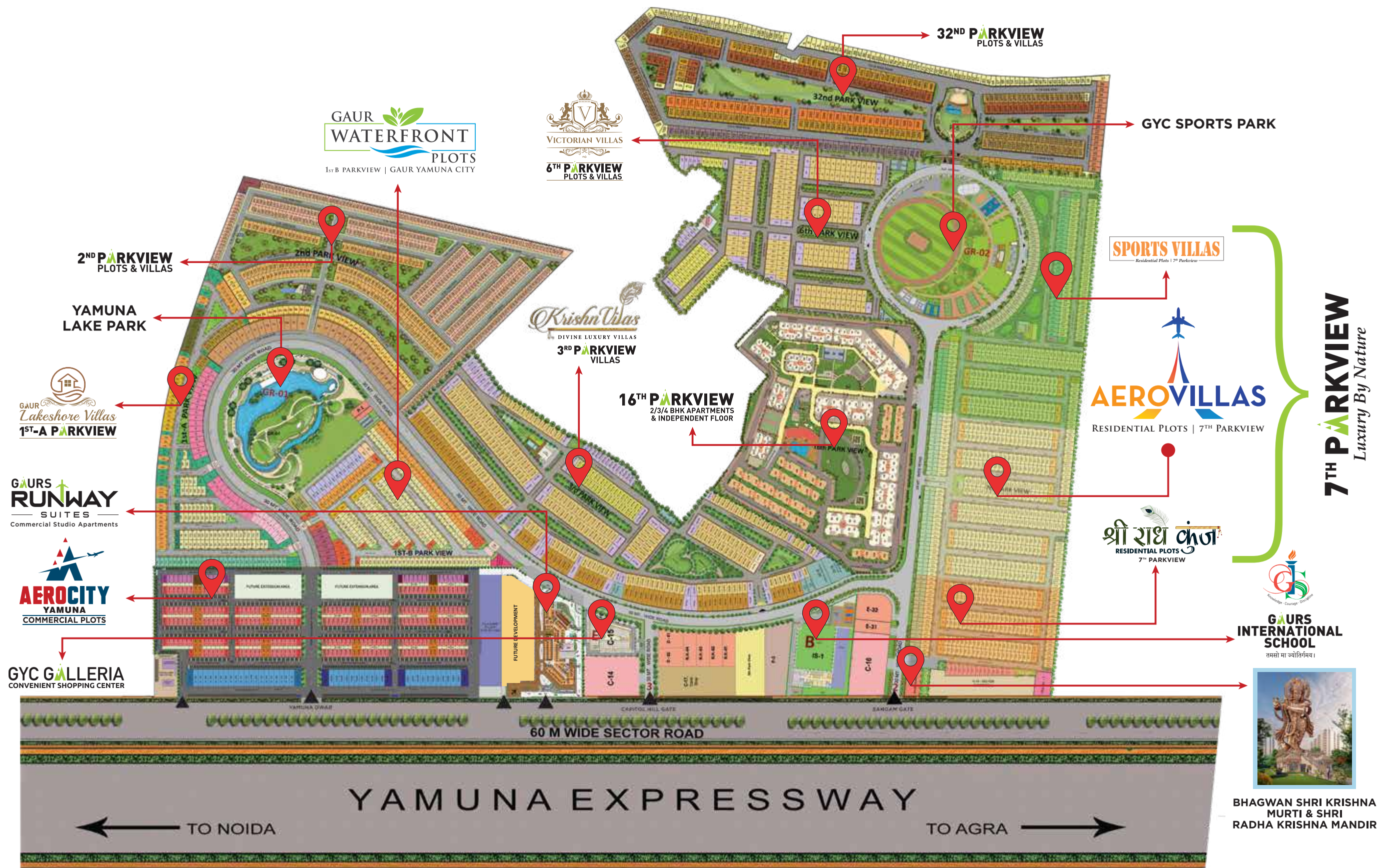
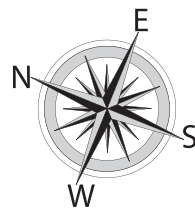
- LAKE YAMUNA PARK
- CHILDREN PARK
- PICNIC SPOT
- BOATING FACILITIES
- FOOD COURT
- LAKE PROMENADE & BIRD WATCHING

### GR-02. RECREATIONAL GREEN AREA (SPORTS PARK)

- OPEN AIR THEATER
- CHILDREN PLAY AREA
- CRICKET GROUND

### FACILITIES

- RELIGIOUS PLOT
- MILK BOOTH
- CLUB FACILITIES



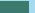






Gaur Realtech Pvt. Ltd. Sub Lease Deed of Part 1 Vide Book No-1, Vol No-13251, Page No-299 to 450, Registration / Document No-11798, Sub Registrar Sadar, Gautam Budh Nagar, (U.P.) on 22-05-2013, Part 2 Vide Book No-1, Vol No-14222, Page No-85 to 134, Registration / Document No-24479, Sub Registrar Sadar, Gautam Budh Nagar, (U.P.) on 05-10-2013, Part 3 Vide Book No-1, Vol No-14828, Page No-227 to 282, Registration / Document No-781, Sub Registrar Sadar, Gautam Budh Nagar, (U.P.) on 09-01-2014, Part 4 Vide Book No-16236, Page No-189 to 242, Registration / Document No-20325, Sub Registrar Sadar, Gautam Budh Nagar, (U.P.) on 27-06-2014, Part 5 Vide Book No-1, Vol No-16526, Page No-107 to 162, Registration / Document No-25183, Sub Registrar Sadar, Gautam Budh Nagar, (U.P.) on 31-07-2014, Map Sanctioned of Aero City at Gaur Yamuna City, Letter No-YEDA/PLG/BP-96/902/2020 Dated: 14/10/2020 by Yamuna Expressway Industrial Development Authority. All images, perspective, specifications, features, figures, are only indicative and not a legal offering. All project related sanctions any other statutory compliance can be seen in person at our office. 1 sq. mtr = 10.764 sq. ft. 1 acre = 4047 sq. mtr. (approx.)

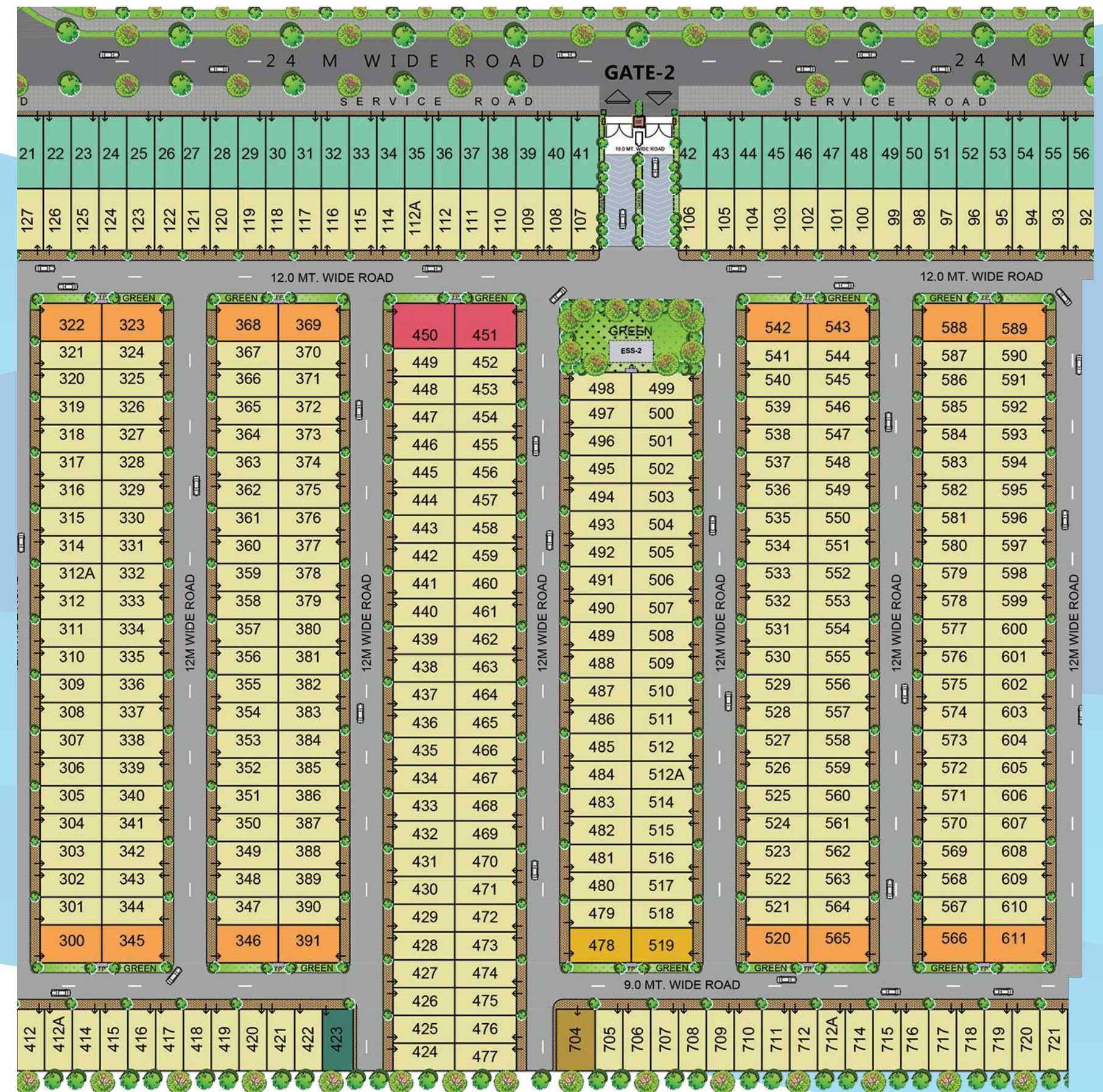
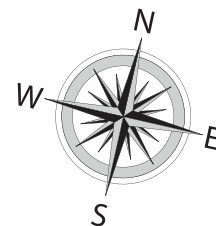




NOS.

	88.20 sqmt. (105 sqyd.)	324
	98.00 sqmt. (117 sqyd.)	1
	103.95 sqmt. (124 sqyd.)	36
	111.16 sqmt. (133 sqyd.)	2
	120.68 sqmt. (144 sqyd.)	16
	123.20 sqmt. (147 sqyd.)	1
	143.50 sqmt. (172 sqyd.)	2

Plot Size, Entry and location - As per GYC-7TH PARK VIEW site plan sanctioned with plot dimension, Plot Entry marked and plot area detail. Plot set back as per YEIDA Authority norms.

[illegible]





Artist's Impression



## THE ULTIMATE LOUNGE FOR LIVING

Aero Villas are premium plots that are a part of 7th Parkview - a plotted development project in Gaur Yamuna City. These plots can be developed into beautiful living abodes. This project will have an International standard cricket ground on one side and the majestic 108 feet Lord Krishna Murti on the other side. Living here would definitely elevate your lifestyle to the skies.





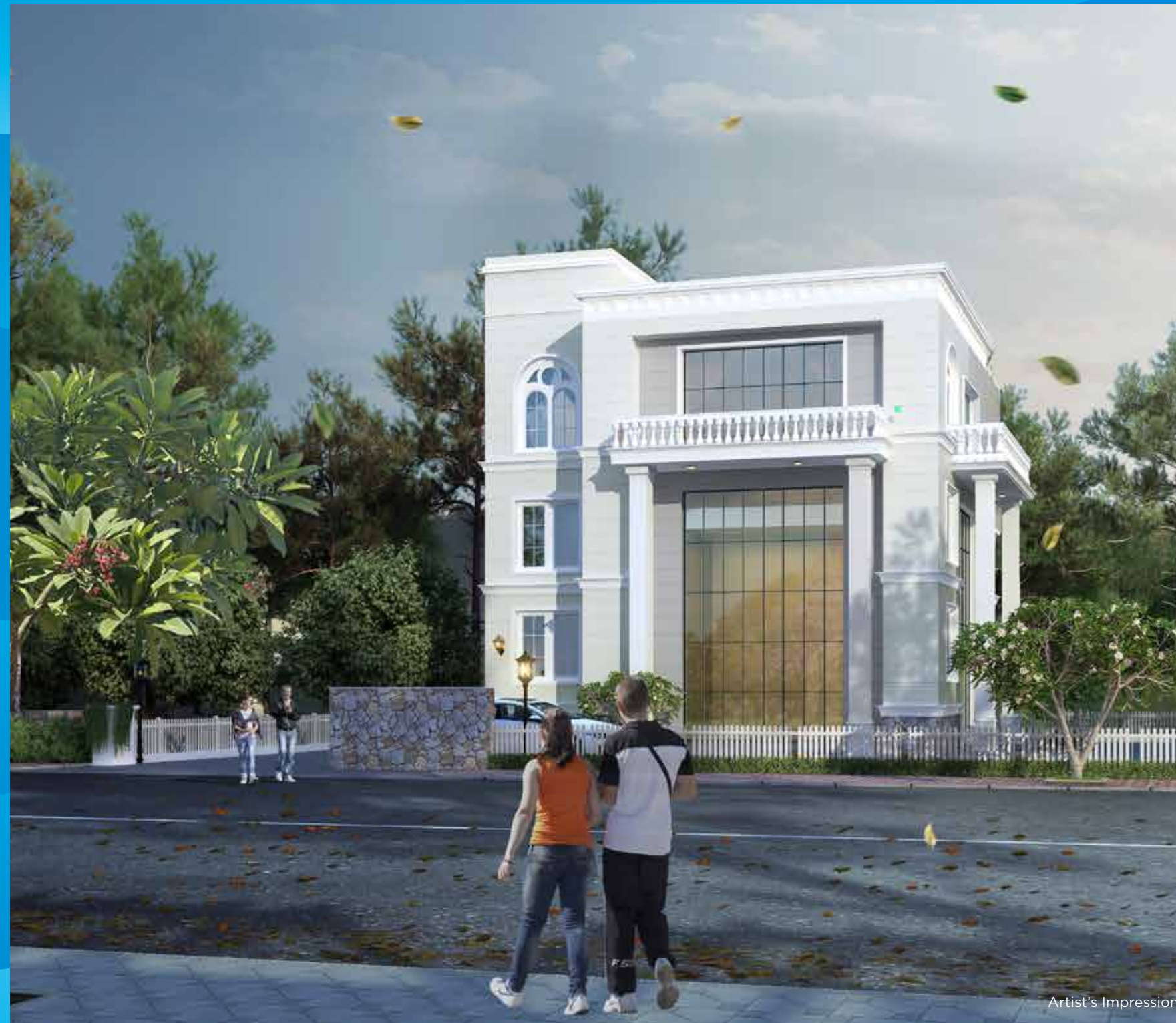


## THE PERFECT AERO BRIDGE FOR HEALTH & SPORTS LOVERS

Walkable distance to a plethora of sports facilities  
Developing International Standard Cricket Ground, Tennis, Badminton, Volleyball,  
Basketball, Skating Rink, Athletic Track & more.

- Exclusive Yoga Park • Kids' Play area • Jogging track
- Open Gym • Beautiful Lake / Water Body





## REJUVENATE YOUR SENSES

The Club at 7th Parkview will be an absolute heaven for the health and fitness enthusiasts with all the latest amenities. While looking for some amusement on free evenings you can choose from various indoor and outdoor game options at our state-of-the-art clubhouse.

- *Gymnasium • Swimming Pool • Table Tennis • Pool Table • Chess*
- *Carrom • Foosball • Party Area • Multi-purpose Hall*





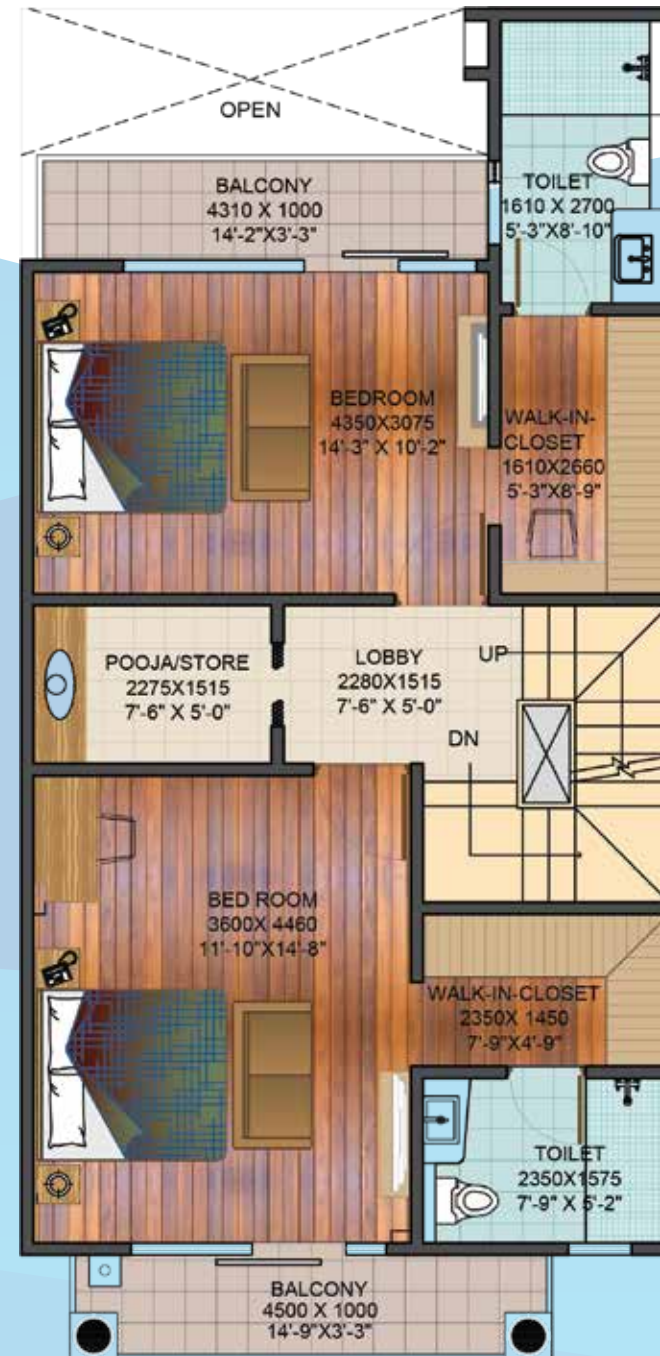
### SUGGESTIVE UNIT PLAN

**PLOT AREA:**  
**88.2 SQ. MTR.**  
**(105 SQ. YD.)**

**Plot Area - 88.2 sq.mtr. (105 sq. yd.)**  
**Total Covered Area of the plot**  
**74.22 + 73.22 + 48.12 = 195.56 sq. mtr.**  
**(798.50) + (788.00) + (517.50) = (2104.00 sq. ft.)**

#### GROUND FLOOR PLAN

Carpet Area	- 53.90 sq. mtr. (580.00 sq. ft.)
External Wall Area	- 5.69 sq. mtr. (61.20 sq. ft.)
COVD. Verandah	- 14.63 sq. mtr. (157.30 sq. ft.)
<b>Total Area</b>	<b>- 74.22 sq. mtr. (798.50 sq. ft.)</b>
Open Area	- 13.98 sq. mtr. (150.40 sq. ft.)



#### FIRST FLOOR PLAN

Carpet Area	- 60.15 sq. mtr. (647.40 sq. ft.)
External Wall Area	- 4.17 sq. mtr. (44.80 sq. ft.)
Balcony Area	- 8.90 sq. mtr. (95.80 sq. ft.)
<b>Total Area</b>	<b>- 73.22 sq. mtr. (788.00 sq. ft.)</b>



#### SECOND FLOOR PLAN

Carpet Area	- 40.40 sq. mtr. (434.60 sq. ft.)
External Wall Area	- 3.42 sq. mtr. (36.70 sq. ft.)
Balcony Area	- 4.30 sq. mtr. (46.20 sq. ft.)
<b>Total Area</b>	<b>- 48.12 sq. mtr. (517.50 sq. ft.)</b>



## PROJECT SPECIFICATIONS

### 7<sup>TH</sup> PARKVIEW

TOTAL SITE AREA	140063.40 SQM. (34.61 ACRE)
PLOTTED AREA	89750.17 SQM. (22.17 ACRE)
CLUB PLOT AREA	600 SQM. (0.14 ACRE)
GREEN AREA	10372.66 SQM. (2.56 ACRE)
ROAD AREA	39326.80 SQM. (9.71 ACRE)
ELECTRICAL FEEDER PILLER	13.77 SQM. (148.21 SQ. FT.)
TOTAL NO. OF PLOTS	954

#### ENTRANCE GATEWAY FOR 7TH PARK VIEW GATE: - 2

- i. 6m wide opening with M.S gate as detail and design.
- ii. Guard room on ENTRY GATE - 2 As per detail.
  - a) Flooring - Granite stone/ Tile
  - b) Internal walls - beige tiles till 2.4m from FFL
  - c) External walls - paint over plaster
  - d) Doors & windows - UPVC / Aluminium frame with glass
- iii. GRC Jaali on guard room top structure element's as detail and design.
  - a) LOGO - mounted over Jaali frame as design.
- iv. Entrance Gate [Entry part] - Granite / Sandstone / Paver Block as detail.

#### GATE: - 3

- v. 6m wide opening with M.S gate as detail and design.  
+1.2m wide opening with M.S. wicket gate for Pedestrian as detail & design.
- vi. Guard room + Toilet's for guard on ENTRY GATE-3 As per detail.
  - e) Flooring - Granite stone/Tile
  - f) Internal walls - beige tiles till 2.4m from FFL
  - g) External walls - paint over plaster
  - h) Doors & windows - Upvc / Aluminium frame with glass
- vii. GRC Jaali on guard room top structure element's as detail and design.
  - a) LOGO - mounted over Jaali frame as design.
- viii. Entrance Gate [Entry part] - Granite / Sandstone / Paver Block as detail.

#### GATE: - 4

- ix. 7.5m wide opening with M.S gate as detail and design.  
+1.2m wide opening with M.S. wicket gate for Pedestrian as detail & design.
- x. Guard room on ENTRY GATE-4 As per detail.
  - i) Flooring - Granite stone/Tile
  - j) Internal walls - beige tiles till 2.4m from FFL
  - k) External walls - paint over plaster
  - l) Doors & windows - Upvc / Aluminium frame with glass
- xi. GRC Jaali on guard room top structure element's as detail and design.
  - a) LOGO - mounted over Jaali frame as design.
- xii. Entrance Gate [Entry part ] - area - Granite / Sandstone / Paver Block as detail.

**Internal Roads (9m wide right of way & 12m wide right of way):-**  
Interlocking tile / VDF finished road with walking path & street light as per architecture layout .

#### GREEN AREAS:

- i. YOGA AREA- Exclusive Yoga Park with a hard paved footpath.
- ii. COMMUNITY AREA- Soft & Hard paved as per detail & design.
  - a) Kids' Play area.
  - b) Jogging track & walking track - concrete finish.
  - c) Open Gym Equipments- 4 nos.
  - d) Seesaw- 2 nos. , Merry go round- 1 nos. , parallel bars- 1 nos.
  - e) Seating - 4nos. bench
  - f) Water Body & landscape features
  - g) Entry gate- 3 nos.

#### CLUB [LAND AREA-600 SQM.]:-

- i. **Multipurpose Hall (Ground floor)**
  - a) Covered Area - 125.4 Sq. mt. (1350 sq. ft. approx)
  - b) Flooring - Vitrified Tiles
  - c) Ceiling - POP finished with paint
  - d) Walls - Paint over Plaster
  - e) Male & female toilet .
- ii. **Indoor play area (on First floor)**
  - a) Area - 125.4 Sq. mt. (1350 Sq. ft. approx)
  - b) Flooring - Vitrified Tiles
  - c) Ceiling - POP finished with paint
  - d) Walls - Paint over Plaster
  - e) Table tennis table - 2 Nos.
  - f) Pool Table - 1 No.
  - g) Chess carrom board - 2 Nos.
  - h) Foosball table - 1 No.
- iii. **Gymnasium & swimming pool with open deck (Second floor)**
  - i) Area - 83.61 Sq. mt. (900 Sq. ft. approx:- Gym + open deck area)
  - j) Flooring - Vitrified Tiles
  - k) Ceiling - POP finished with paint
  - l) Walls - Paint over Plaster
  - m) Equipments - Treadmill - 1 No., Bikes - 1 No., Benches - 1 No., Dumble with rack - 2 set.
  - n) Changing Room - Male & Female with shower & w.c. in each with locker.
- iv. **Swimming Pool ( main)**
  - a) Pool Size - 14.6m x 3.6m ( with independent standalone filter system)
  - b) Pool depth - 1.1m (max.)
  - c) Finishes - Tiles
  - d) Pool deck area - finished with tile flooring
- v. **Under ground water tank [400 KLD]+& pump room [In Club basement].**
- vi. **Club Green**
  - a) Open Party area outside Hall - Natural grass / Shurbs / Plants
  - b) Lighting - Street Light poles
  - Parking - Paved (As sanction drawing.)
- vii. **Staircase - stone flooring as selection & railing as design.**

#### ESS/CSS & METER ROOM

- i. Meter room for 7th PARK VIEW.
- ii. ESS/CSS as marked in drawing / capacity as per detail.
- iii. Feeder Pillars Provided In Green strips enclosed by green.
- iv. DG sets only for common area street lights & external common services.

## PROJECTS @ GAUR YAMUNA CITY

### ONGOING



**3<sup>RD</sup> PARKVIEW**  
PLOTS & VILLAS  
RERA NO: UPRERAPRJ16103



RERA NO: UPRERAPRJ351477



RERA NO: UPRERAPRJ16087



RERA NO: UPRERAPRJ16087



**6<sup>TH</sup> PARKVIEW**  
PLOTS & VILLAS  
RERA NO: UPRERAPRJ15838



RERA NO: UPRERAPRJ351477



RERA NO: UPRERAPRJ16087



**COMMERCIAL PLOTS**  
RERA NO: UPRERAPRJ342117

### DELIVERED



**DELIVERED**  
RERA NO: UPRERAPRJ4464



**DELIVERED**  
RERA NO: UPRERAPRJ4193



**PHASE-I DELIVERED**  
RERA NO: UPRERAPRJ6801



**DELIVERED**  
RERA NO: UPRERAPRJ4602





# NOIDA INTERNATIONAL AIRPORT IN NEWS

Jai Shri Krishna



A 101 HECTARES (250 ACRES)  
INTEGRATED TOWNSHIP  
ON YAMUNA EXPRESSWAY

is blessed with India's tallest statue of  
Lord Shri Krishna standing majestically  
at 108 feet height atop a grand Temple  
(Under development)



**Disclaimer:** All images including stock images, colours, pictures and accessories are indicative and used for illustrative purposes only. For the actual project details, please refer to the specifications mentioned in the subsequent pages of this brochure.

Disclaimer: All information above is in reference from newspapers and news portals.



# THE RIVER OF KNOWLEDGE FLOWS AGAIN

OPERATIONAL **3<sup>RD</sup> SCHOOL** AT YAMUNA EXPRESSWAY

ARTIST'S IMPRESSION



ACTUAL IMAGE



## GAURS INTERNATIONAL SCHOOL

तमसो मा ज्योतिर्गमय ।

@

GAUR YAMUNA CITY, YAMUNA EXPRESSWAY

AFTER THE SUCCESS OF TWO BRANCHES OF GAURS INTERNATIONAL SCHOOL AT GAUR CITY WITH 3500+ STUDENTS, WE BRING THE PREMIER EDUCATIONAL INSTITUTE TO GAUR YAMUNA CITY. EQUIPPED WITH WORLD-CLASS FACILITIES AMIDST TOP NOTCH INFRASTRUCTURE AND AN INTERNATIONAL CURRICULUM, GAURS INTERNATIONAL SCHOOL BELIEVES IN NURTURING YOUR CHILD IN EVERY ASPECT.

### HIGHLIGHTS

- AC CLASSROOMS
- BEST TEACHER STUDENT RATIO
- SMART CLASSROOMS WITH PROJECTORS
- AMPHITHEATRE
- MUSIC, ART & DANCE ROOM
- MEDICAL ROOM
- RFID ENABLED ID CARDS
- CBSE BASED CURRICULUM
- CRICKET PITCH
- FOOTBALL
- VOLLEY BALL
- GPS ENABLED BUSES\*

\*PROCURING SOON

**ADMISSIONS NOW OPEN FOR SESSION 2022-2023**

**NURSERY TO 8<sup>TH</sup> STANDARD**

[www.gaursinternationalschool.com](http://www.gaursinternationalschool.com)





**SMART CITY EMPOWERING  
INDIA AWARDS 2019**  
BEST SMART CITY  
DEVELOPER OF THE YEAR  
- GAURSONS INDIA



**TIMES BUSINESS  
AWARDS 2019**  
BEST REAL ESTATE  
DEVELOPER OF THE YEAR  
- GAURSONS INDIA



**PMAY EMPOWERING INDIA  
AWARDS 2019**  
THE MOST WELL PLANNED  
UPCOMING PROJECT IN EWS CATEGORY  
- GAURS SIDDHARTHAM



**CNBC AWAAZ REAL ESTATE  
AWARDS 2018-19**  
BEST RESIDENTIAL PROJECT  
AFFORDABLE SEGMENT - NORTH ZONE  
- GAUR CITY-2



**CNBC AWAAZ REAL ESTATE  
AWARDS 2017-18**  
BEST RESIDENTIAL PROJECT  
AFFORDABLE SEGMENT - NATIONAL  
- GAUR CASCADES



**NDTV PROPERTY  
AWARDS 2016-17**  
BUDGET APARTMENT PROJECT  
OF THE YEAR (2017) TIER 1 CITIES  
- GAUR CASCADES



**NDTV PROPERTY  
AWARDS 2016-17**  
BEST TOWNSHIP PROJECT  
- GAUR CITY



**CNBC AWAAZ REAL ESTATE  
AWARDS 2016-17**  
BEST TOWNSHIP PROJECT  
- GAUR CITY



**NDTV PROPERTY  
AWARDS 2015**  
BEST EXECUTION-TRACK RECORD  
- GAUR CITY



Ever since its inception in the year 1995, Gaurs has been revered as an icon of excellence in the world of real estate. With a burgeoning list of residential projects that encompass high end apartments to highly affordable accommodations occupied by thousands of happy families, Gaurs' stress on customer's trust has become the winning mantra. The pointed, unnerving focus on creating a better tomorrow has been the driving force at Gaurs. It is our foresight, eye for perfect locations and excellence in execution that has earned us a much-deserved success throughout our long journey. And armed with the confidence and verve to enrich lives, one can safely say that the future belongs to Gaurs.

## THE HALLMARKS TO OUR CREDIT



### ONGOING RERA REGISTERED PROJECTS

Gaur Mulberry Mansions, Gr. Noida (West)  
**UPRERAPRJ7057, UPRERAPRJ4897**  
KrishnVilas (3rd Parkview)  
Gaur Yamuna City **UPRERAPRJ16103**  
Gaurs Siddhartham, Siddharth Vihar,  
Ghaziabad **UPRERAPRJ3935**  
Victorian Villas (6th Parkview)  
Gaur Yamuna City **UPRERAPRJ15838**  
16th Parkview Phase-II,  
Gaur Yamuna City **UPRERAPRJ6801**  
7th Avenue, Phase-II, Gaur City,  
Gr. Noida (West) **UPRERAPRJ6695**

14th Avenue Phase-II, Gaur City-2,  
Gr. Noida (West) **UPRERAPRJ6742**  
Gaur City Mall Ph-II,  
Gr. Noida (West) **UPRERAPRJ6934**  
Gaurs Runway Suites,  
Gaur Yamuna City **UPRERAPRJ351477**  
Gaur City Center Ph-II,  
Gr. Noida (West) **UPRERAPRJ4780**  
Gaurs Platinum Towers (Gaur Sportswood)  
Sector-79, Noida **UPRERAPRJ3528**  
Aerocity Yamuna, Gaur Yamuna City  
**UPRERAPRJ342117**

Gaur World SmartStreet,  
(Formerly known as Gaur World Street)  
Gr. Noida (W) **UPRERAPRJ674297**  
7th Parkview, Gaur Yamuna City  
Sports Villas  
Aero Villas  
Shri Radhey Kunj  
**UPRERAPRJ16087**  
Gaur Lakeshore Villas (1st-A Parkview),  
Gaur Yamuna City **UPRERAPRJ574384**  
Gaur Waterfront Plots, (1st-B Parkview),  
Gaur Yamuna City **UPRERAPRJ235739**



### DELIVERED RESIDENTIAL PROJECTS

Gaur Residency, Chander Nagar  
Gaur Galaxy, Vaishali  
Gaur Heights, Vaishali  
Gaur Ganga, Vaishali  
Gaur Ganga 1, Vaishali  
Gaur Ganga 2, Vaishali  
Gaur Green City, Indirapuram  
Gaur Green Avenue, Indirapuram  
Gaur Green Vista, Indirapuram  
Gaur Valerio, Indirapuram  
Gaur Homes, Govindpuram

Gaur Homes Elegante, Govindpuram  
Gaur Grandeur, Noida  
Gaur Global Village, Crossings Republik  
Gaur Gracious, Moradabad  
Gaur Cascades, Raj Nagar Extn. Ghaziabad  
Gaur Saundaryam, Gr. Noida (West)  
1st Avenue, Gaur City  
4th Avenue, Gaur City  
5th Avenue, Gaur City  
6th Avenue, Gaur City  
10th Avenue, Gaur City-2

11th Avenue, Gaur City-2  
12th Avenue, Gaur City-2  
16th Avenue, Gaur City-2  
Gaur Sportswood, Sector-79, Noida  
Gaur Atulyam, Gr. Noida  
14th Avenue, Ph-1, Gaur City-2  
7th Avenue, Ph-1, Gaur City  
2nd Parkview, Gaur Yamuna City  
16th Parkview Phase-1, Gaur Yamuna City  
32nd Parkview, Gaur Yamuna City



### DELIVERED COMMERCIAL PROJECTS

Gaur Plaza, Shalimar Garden, Ghaziabad  
Gaur Residency-Gravity, Chander Nagar,  
Ghaziabad  
Gaur Galaxy-Gravity, Vaishali, Ghaziabad  
Gaur Square Govindpuram, Ghaziabad  
Gaur Green City-Gravity, Indirapuram,  
Ghaziabad  
Gaur Homes-Gravity, Govindpuram,  
Ghaziabad  
Gaur Heights-Gravity, Vaishali, Ghaziabad  
Gaur Ganga-Gravity, Vaishali, Ghaziabad  
Gaur Ganga-I-Gravity, Vaishali, Ghaziabad  
Gaur Ganga-II-Gravity, Vaishali, Ghaziabad  
Gaur Green Vista-Gravity, Indirapuram,  
Ghaziabad  
Gaur Gracious-Gravity, Moradabad  
Gaur Global Village-Gravity, NH-24,  
Ghaziabad  
Gaur Grandeur-Gravity, Sector-119, Noida  
Gaur Valerio-Gravity, Indirapuram,  
Ghaziabad

Gaur Cascades-Hi-Street, NH-58, Raj  
Nagar Extn.  
Gaur Biz Park, Indirapuram, Ghaziabad  
Gaur Gravity, Indirapuram, Ghaziabad  
Gaur City Plaza, Gaur City, Greater  
Noida West  
Gaur City Galleria, Gaur City, Greater  
Noida West  
Gaur City Arcade, Gaur City, Greater  
Noida West  
GYC Galleria, Gaur Yamuna City, Yamuna  
Expressway  
Gaur Atulyam-Gravity, Gr. Noida  
Gaur Saundaryam High-Street,  
Gr. Noida (W)  
Gaurs Sportswood Arcade, Sec-79, Noida  
Gaur City Center Phase-I, Gr. Noida (W)  
14th Avenue High Street, Gr. Noida (W)



### EDUCATION

**Gaurs International School**  
Gaur City-2, Greater Noida (West)  
Junior Wing, Gaur City - 2, Greater Noida (West)  
Gaur Yamuna City, Yamuna Expressway  
Gaurs Siddhartham, Siddharth Vihar,  
Ghaziabad (Under Development)



### RETAIL

Gaur City Mall, Greater Noida (W)  
Gaur Central Mall, RDC, Raj Nagar,  
Ghaziabad



### HOTELS

The Gaurs Sarovar Portico, Gaur City,  
Gr. Noida West

**26**  
YEARS OF UNFLINCHING  
COMMITMENT

**50+**  
SUCCESSFULLY  
DELIVERED PROJECTS

**20000+**  
UNITS  
UNDER DEVELOPMENT

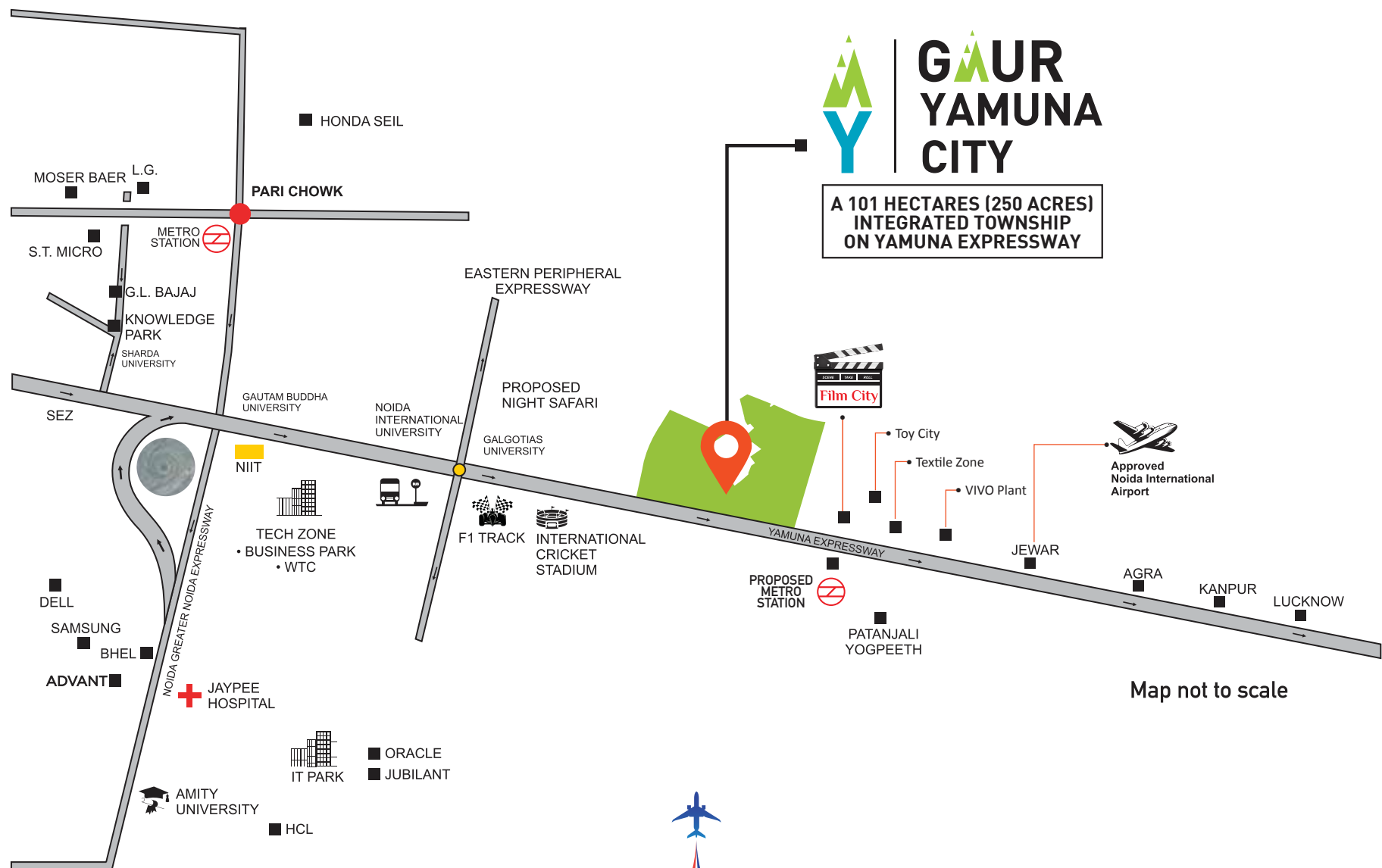
**35000+**  
POSSESSIONS  
GIVEN (2014-2020)

**50000+**  
DELIVERED  
UNITS

**100000+**  
HAPPY  
CUSTOMERS

**6000000+**  
SQUARE METER  
AREA DEVELOPED





RESIDENTIAL PLOTS @ GAUR YAMUNA CITY

SITE OFFICE: **SEC-19, YAMUNA EXPRESSWAY, DIST. GAUTAM BUDDH NAGAR (U.P.)**  
CORPORATE OFFICE: **GAUR BIZ PARK, PLOT NO-1, ABHAY KHAND II, INDIRAPURAM, GHAZIABAD - 201014**

RERA REGN. NO.: **UPRERAPRJ16087 | www.up-rera.in**

AFTER SALES **CUSTOMER CARE 1800 180 3052**



REAL ESTATE | RETAIL | EDUCATION | HOTELS | NBFC | CONTRACTING | SPORTS | ENERGY

[www.gaursonsindia.com](http://www.gaursonsindia.com)



[www.gaursonsindia.com](http://www.gaursonsindia.com)



Payment Gateway for existing customers



[www.facebook.com/GaursonsIndiaPrivateLimited](https://www.facebook.com/GaursonsIndiaPrivateLimited)



[www.twitter.com/gaursons\\_india](https://www.twitter.com/gaursons_india)